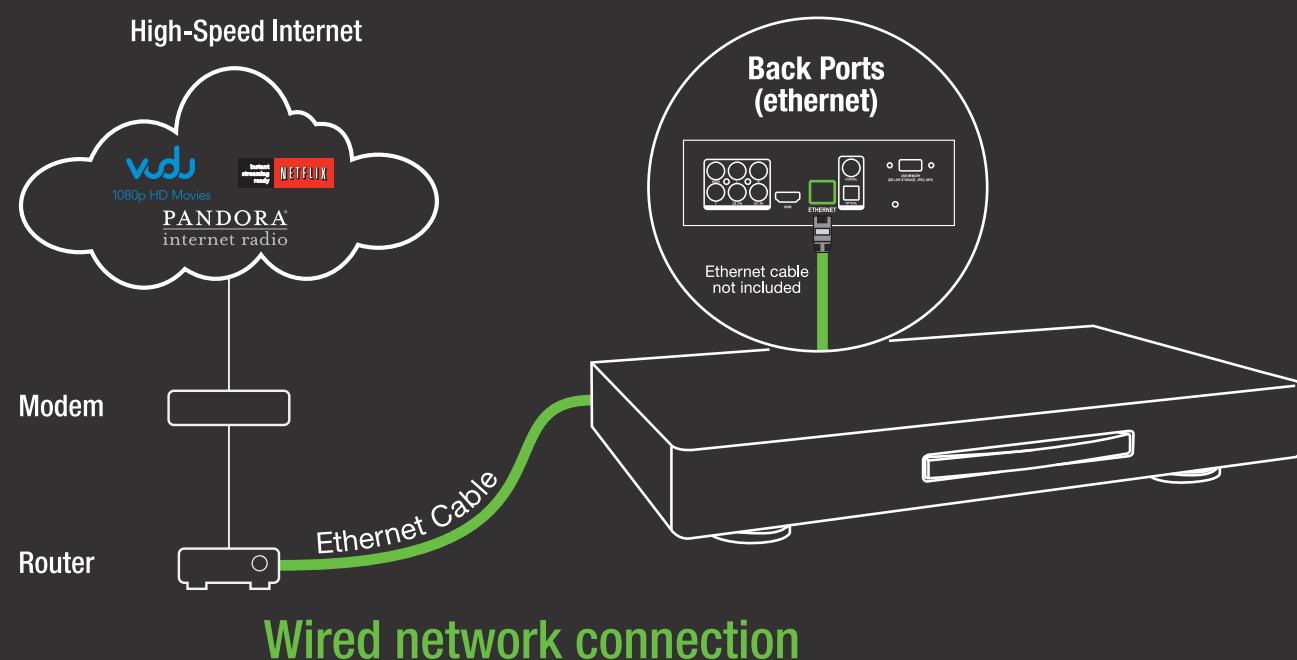
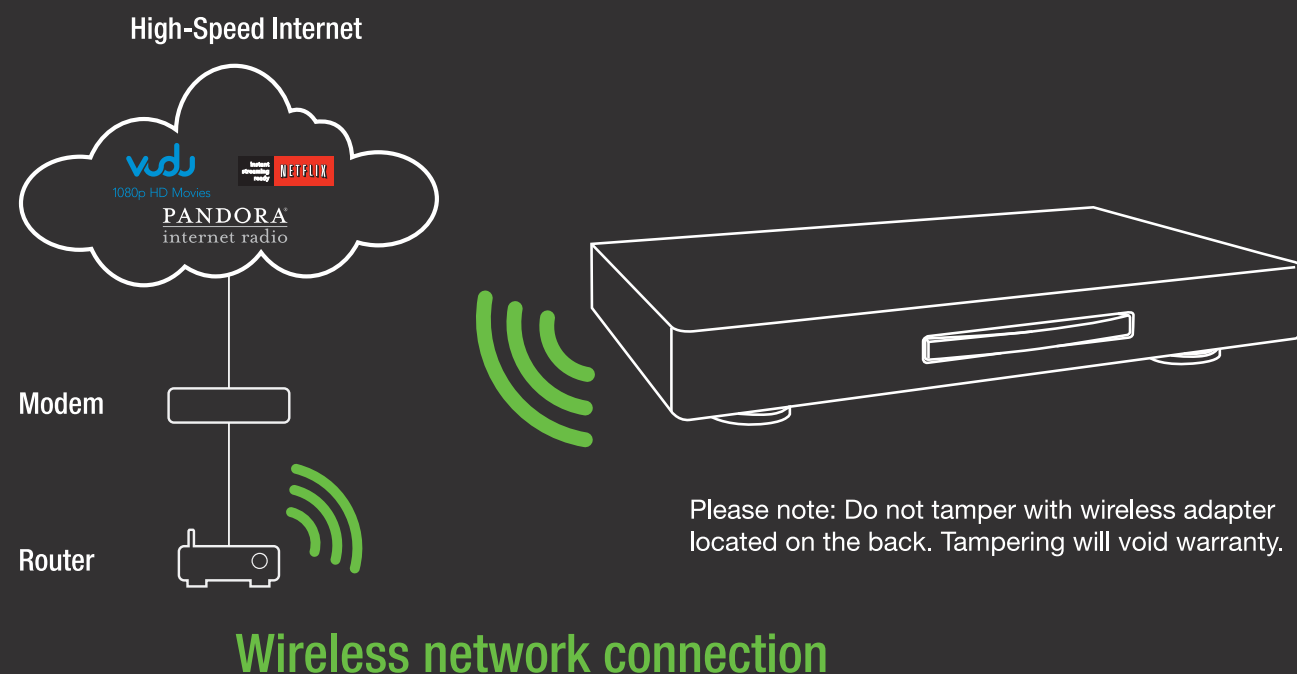


3 CONNECT TO THE INTERNET AND GET MORE ENTERTAINMENT ON DEMAND



or



HELP TOPICS

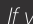


No power

- Make sure the power is ON.
- Make sure the AC power cord is securely connected to the AC socket.
- Plug another electrical device into the power outlet to verify that the outlet is working.

Remote control does not work

- Point the remote directly at the remote sensor on your player (between the power button and the tray).
- Remove any obstacles between the remote control and the remote sensor.
- Make sure that bright light does not shine on the remote control sensor or that colored glass is not in front of the sensor. Bright light and colored glass can interfere with signal reception.
- Replace dead batteries with new ones.

Player does not work

- If you see , the action you are trying to do is not allowed by your player or the disc.
- A built-in safety device may have been activated. Press  on the front of your player to turn it off, and then turn it on again. If your player still does not turn on, unplug the power cord, wait about one minute, plug it in again, and then press  on the front of your player.
- Condensation may have formed inside your player. Turn on your player, remove the disc, leave the tray open, and then leave your player on for two to three hours.

Blu-ray Disc or DVD does not play

- Make sure that the disc has the same region code as your player.
- Make sure that the disc is not dirty or defective.
- The Parental Controls rating may be blocking the disc. Enter the 4-digit password and change the parental settings.

Video is not in high-definition

- Connect the TV using HDMI or Component video. Composite video cannot output in high-definition.
- If you have connected the TV to the HDMI or component video jacks, make sure that you have selected the correct resolution in the Settings menu.
- Almost all commercial DVDs (but not Blu-ray discs) limit component video resolution to 480p. Upscaling of commercial DVD content is only possible over HDMI.
- Your TV is not capable of displaying HD video. Consult your TV documentation.

Wireless Connection Issues

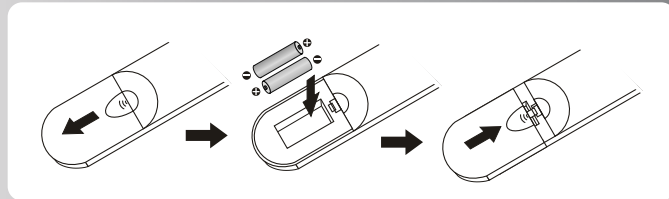
- Refer to the user manual for your wireless router or contact the manufacturer of either your router or your Internet Service Provider if they provided the router for you.
- Make sure the Internet connection is set up correctly. **See Connecting to your home network on page 18 of the User's Manual**
- Test the Internet connection to make sure it is working. **See the Network Menu on page 35 for detailed information.**
- Check the network connectivity with other devices (such as a laptop or desktop computer). If these devices also cannot connect, please reference your wireless device's User Manual for further configuration assistance.

The Internet Apps are not working

- Make sure the Internet connection is set up correctly. **See Connecting to your home network on page 18 of the User's Manual**
- Test the Internet connection to make sure it is working. **See the Network Menu on page 35 for detailed information.**
- Any questions or requests for service relating to the content or services should be made directly to the specific App service providers.

1 INSERT REMOTE CONTROL BATTERIES

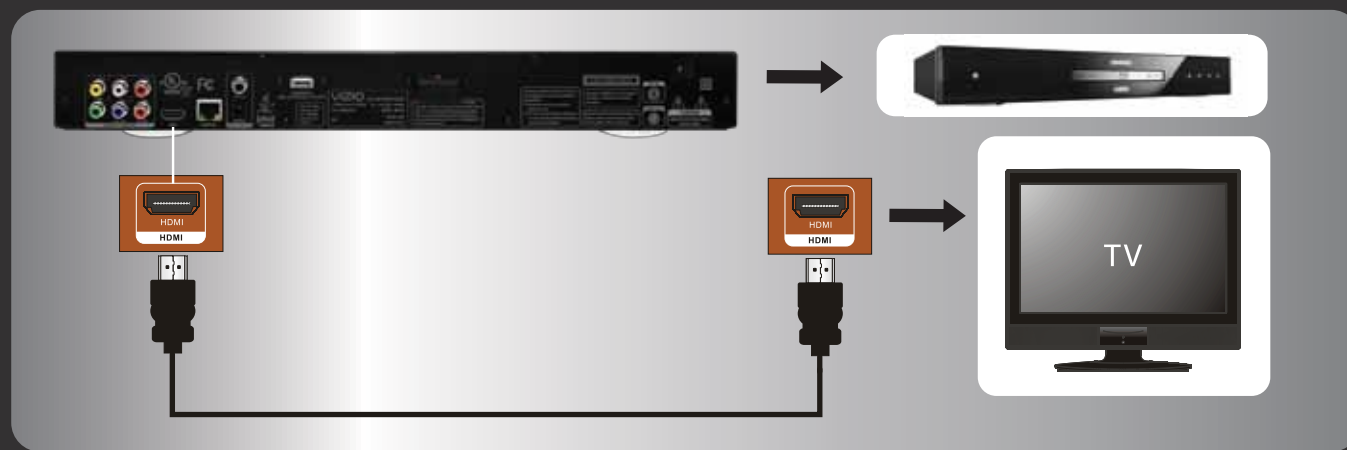
Remove battery cover, then insert batteries matching + and - symbols. Replace battery cover.



2 CONNECT TO YOUR TV

Option A - HDMI Connection

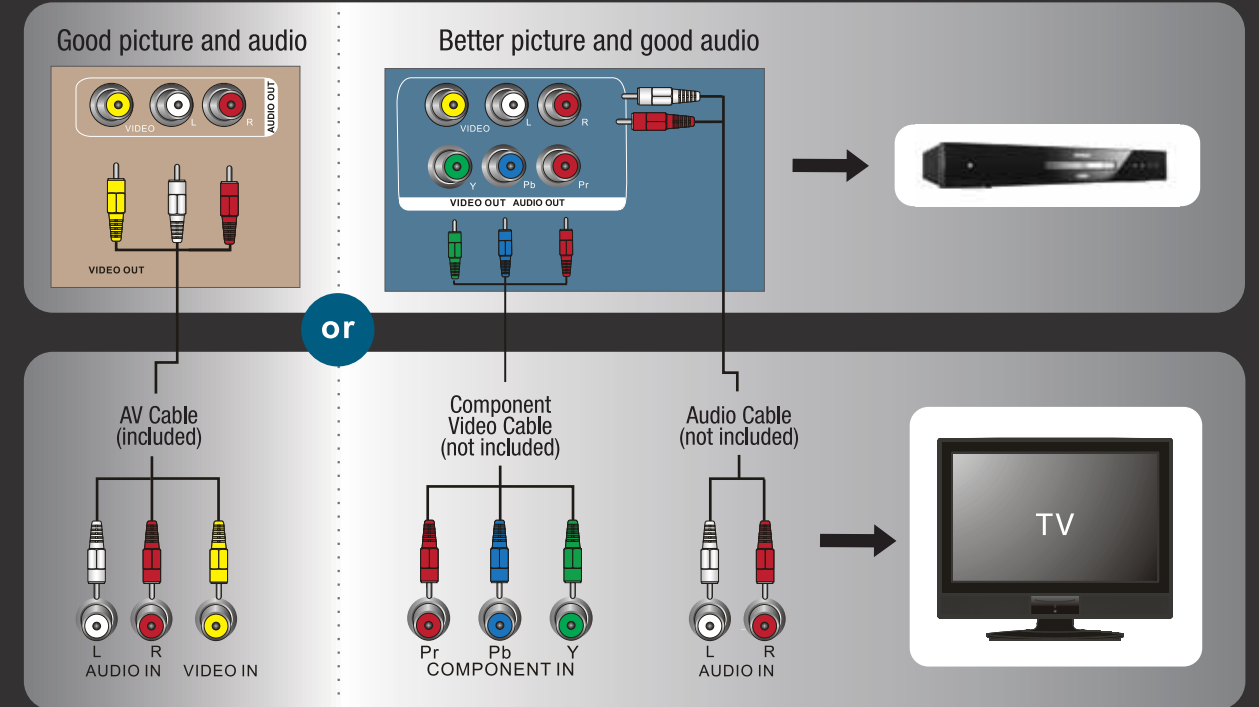
High Quality Connection for best video and audio if your TV has an HDMI input connection as shown below.



All devices should be turned off and disconnected from the power outlet before making connections.

2 CONNECT TO YOUR TV (Cont.)

Option B - Basic Audio & Video Connection
Connecting your TV using component video cables or AV cables.



ADD TO YOUR HOME THEATER EXPERIENCE
Visit www.VIZIO.com to review our full line of VIZIO-certified accessories or call 888-849-4623 for more information.

HIGH-DEFINITION SOUND

Complete your total Home Theatre experience with stunning audio from VIZIO accessories such as the Sound Bar with Wireless Subwoofer.



HDMI CABLES

Featuring universal compatibility, VIZIO's HDMI cables deliver both 1080P high definition video & up to 7.1 Surround Sound all in a single cable.

REGISTER NOW
Register your product online today and receive the latest VIZIO news and special offers.
www.VIZIO.com